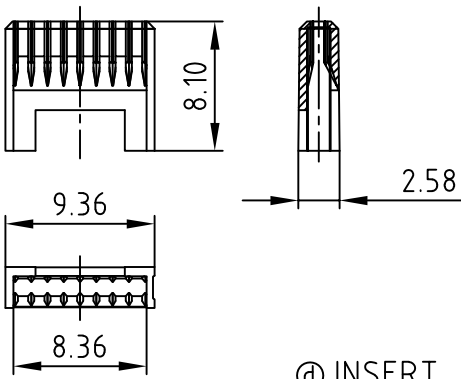
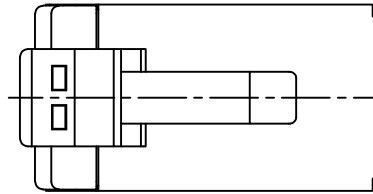
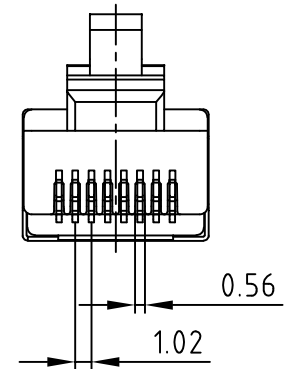
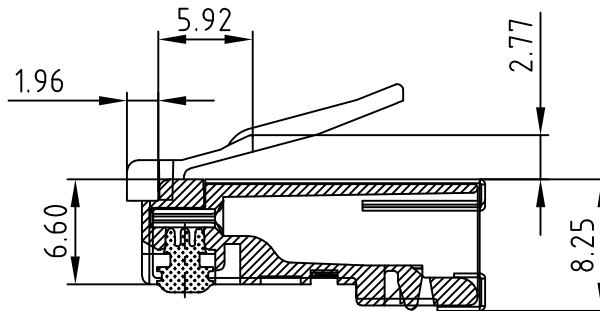
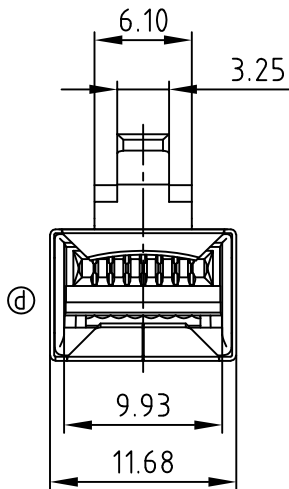
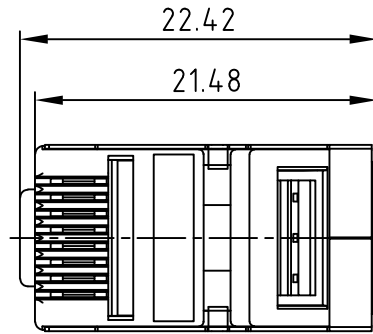


used for: Shielded Cat. 5e



① INSERT



① NOTES:

1. Electrical specifications:

Meets TIA/EIA-568 and IEC60603-7-3 specifications

Contact resistance: 20 mOhm max.

Insulation resistance: 500 MOhm min @ 100 V DC

Current rating 1,5 A max @ 25 °C

Working voltage: 55 VDC

Part pass test for separating Connecting Hardware under electrical load,

2 A per conductor in accordance to IEC 60512-99-002 (4 Pair Power over Ethernet)

DWV: 1000 V DC / 60 s contact to contact

1500 V DC / 60 s contact to metal shell

Operating temperature: -40 °C to +85 °C

② 2. Materials:

Housing: Polycarbonate, UL 94 V-0

③ Insert: Polycarbonate, UL 94 V-2

Contacts: Three prong pin fits solid/stranded wires

Gold plating: 50µin(≥1.27µm)

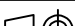

Housing color: Transparent

Insert color: Transparent

Shielded material: Brass with nickel plated

3. Suitable for AWG24-26 stranded and solid wires

RoHS compliant

| | | | | | | | | | | |
|--|-------------|----------|------------|--|-------|----------|---|--|--|-----------------------|
| THIS DRAWING MAY NOT BE COPIED OR REPRODUCED IN ANY WAY, AND MAY NOT BE PASSED ON TO A THIRD PARTY WITHOUT WRITTEN PERMISSION. OWNERSHIP AND COPYRIGHT OF CONEC GmbH DO NOT ALTER CAD DRAWING BY HAND | | | | tolerance ±0.1 | | |  dim. in mm | scale: 2:1 | | |
| | | | | | | | | material: SEE NOTES | | |
| | | | | | 2006 | date | name | title: Shielded Cat. 5e RJ45 Plug with one insert with 3 prongs pin for both stranded solid wires | | |
| | | | | | drawn | Sept. 08 | Vincent Ke | | | |
| | | | | | appd. | Sept. 08 | J. Chaudry | | | |
| | | | | | | | | | | |
| | 3 x d | Ä22-0021 | 30.08.2022 | ABU | norm | | | dwg no: 39K1A270 part no: 391J00039X | | |
| | c | | Jul/06/11 | V. Ke | d-old | | | | | DIN-A 3 sh: 1/1 |
| | 2 x b | | May/15/07 | V. Ke | | | | | | |
| | a | Original | | | | | | | | |
| rev. | description | date | name |  | | | | | | |
| | | | | | | | | | | |